



Ohio Angus Super Star Sale



Display of Entries - 11:00 a.m.
Friday, March 19, 2010

Sale - 12:00 noon
Saturday, March 20, 2010
Auctioneer: Ron Kreis



Columbus

Sale Features

Females - Potential donors from proven programs, show heifers, bred heifers

Bulls - yearling and 2 year-olds with the hottest genetics for commercial and Angus herds

Allen Gahler, Sale Manager
641 N Elliston-Trowbridge Rd.
Graytown, Ohio 43432
(419) 350-2091
secretary@ohioangus.org
www.ohioangus.org

Sale Location:
Ohio Beef Expo
Ohio State Fairgrounds
Columbus, OH
For complete details and schedules,
visit www.ohiobeefexpo.com

INDEX TO CONSIGNORS

| | | | Females | Bulls |
|----------------------------|---------------------|-----------------------------|-----------------|-------------------|
| Anderson Farm..... | Lisbon, OH..... | Harry Anderson..... | 45, 49..... | 14, 17..... |
| | 330-424-9208 | andersonfarm44095@yahoo.com | | |
| Claylick Run | Newark, OH..... | Dave Felumlee..... | 37, 42, 50.... | 5..... |
| | 740-763-4616 | dfelumlee@windstream.net | | |
| Cooper Angus..... | Mt. Gilead, OH..... | Doit Cooper..... | | 25..... |
| | 419-768-2472 | | | |
| Dadosky Farm..... | Wheelersburg, OH.. | Paul Dadosky..... | | 3, 6..... |
| | 740-820-8797 | jdadosky@hotmail.com | | |
| DC Angus..... | West Chester, OH... | Richard Clarke..... | 32, 52..... | |
| | 513-615-0997 | dclarke9740@zoomtown.com | | |
| Ferguson Show Cattle..... | Chardon, OH..... | John Ferguson..... | | 11, 13..... |
| | 440-478-0782 | john@fergusonshowcattle.com | | |
| Gahler Farms..... | Graytown, OH..... | Allen Gahler..... | 36, 55..... | |
| | 419-350-2091 | gahler2@yahoo.com | | |
| HFS Angus..... | Radnor, OH..... | Tim Harsh..... | 39, 40, 43..... | 9..... |
| | 740-595-3543 | hfsangus@hotmail.com | | |
| Home Acres Farm, Inc..... | Lebanon, OH..... | Terry Schuh..... | 44..... | |
| | 513-315-4419 | tschuh1823@aol.com | | |
| Jon Weisel..... | Louisville, OH..... | Jon Weisel..... | | 4, 15..... |
| | 330-875-4061 | megggers5678@aol.com | | |
| Kasler Cattle Company..... | Millfield, OH..... | Brent Kasler..... | 38, 41, 46..... | 18, 28, 31.... |
| | 740-448-7271 | kccangus@hughes.net | | |
| Kingsway Angus | Tiffin, OH..... | John King..... | 48, 51, 53..... | 2, 16, 29, 30.... |
| | 419-937-1864 | kingswayangus@yahoo.com | | |
| McConnel Creek Cattle..... | Lucasville, OH..... | Sue LeBrun..... | | 22..... |
| | 740-820-2470 | sslebrun@excite.com | | |
| Mullett Angus Farm..... | Coshocton, OH..... | Gene & Janet Mullett..... | 33..... | 26, 27..... |
| | 740-502-2326 | gmullett@roadrunner.com | | |
| Nobeland Farm..... | Caldwell, OH..... | James Secrest..... | 54..... | |
| | 740-732-5324 | secrest2@earthlink.net | | |
| Paradise Cattle Co..... | Ashville, OH..... | Jim & Sharon Winter | | 1, 12, 20, 24.... |
| | 740-983-2755 | jswinter1@verizon.net | | |
| Rains Angus..... | Mercer, PA..... | Dale Rains..... | 47..... | 21, 23..... |
| | 724-748-4117 | rainsangus@zoominternet.net | | |
| Rollin On Farms, LLC..... | Jamestown, OH..... | Mike Howell..... | 34, 35..... | 7, 8, 10..... |
| | 937-453-2063 | rollinonfarms2@aol.com | | |
| Shawnee Farm | Bowling Green, OH | Mark Patton..... | | 19..... |
| | 419-354-8596 | m spatton@wcnet.org | | |

WELCOME!

On behalf of the Ohio Angus Association and their Board of Directors, it gives me great pleasure to welcome you to our Super Star Sale. With the number of show winners consigned and the proven commercial profitability of the dams and sires represented, this promises to be an excellent sale that will surely please both buyer and seller, from the commercial cattleman to purebred Angus breeders and Jr. showmen.

Whether you are looking for a proven bull, a young bull for a small herd, a show heifer, or a replacement female, this sale has what you need - with excellent EPD's and pedigrees throughout. Make plans to be in Columbus on Friday at 11:00 a.m. for a display of the sale entires in Cooper Arena. The sale will begin at 12:00 Noon on Saturday.

Feel free to contact the breeders listed above about their consignments, and if I can be of help to anyone before or during the Expo, I can be reached at 419-350-2091, or by e-mail, secretary@ohioangus.org

I am excited about the lineup for this sale, and I look forward to seeing you at the Ohio Beef Expo!

Your Secretary/Fieldman,
Allen Gahler



SUPER STAR SALE

www.ohioangus.org

Ohio State Fairgrounds, Columbus, Ohio

Display of Entries

SUPER STAR SALE

11:00 a.m., Friday, March 19
Cooper Arena

12:00 Noon, Saturday, March 20
Auctioneer: Ron Kreis (740) 796-5242

SELLING 55 LOTS

31 Bulls 24 Females

OHIO ANGUS ASSOCIATION

Sale Committee
Tim Harsh, Chairman
C. Wayne Baird
Dave Felumlee
Paul Hill
Joe Sanders
JIm Winter
Tom Woodward

SALE MANAGED BY:
OHIO ANGUS ASSOCIATION
Allen Gahler, Secretary/Fieldman
641 N. Elliston-Trowbridge Rd.
Graytown, Ohio 43432
Phone: (419)350-2091
secretary@ohioangus.org

Executive Committee
President - Bob Deitrick
Vice President - Dave Felumlee
Chairman - Doug Majors
Treasurer - Bill Levering
Secretary - Allen Gahler

Special Representatives
Chuck Grove (434-525-4687).....Angus Journal

SALE LOCATION: Ohio State Fairgrounds, Columbus, Ohio.
The fairgrounds are located between 17th & 11th Avenues, off I-71 North. Use 11th Street entrance on Sale Day.

SALE DAY PHONES
(419) 350-2091 Sale manager cell

TRANSPORTATION
Port Columbus International Airport has excellent commercial air services by all major airlines. Planes will be met upon request.

TERMS AND CONDITIONS
The cattle sell under the standard terms and conditions as recommended by the American Angus Association. A copy of these terms is available at the sale. **Cash or check only on day of sale. We are unable to accept credit cards.**

ABSENTEE BIDS
Buyers unable to attend the sale may send their bids to the sale manager or sale representatives.

HEALTH OF CATTLE
All cattle will be accompanied with proper health papers for Interstate shipment.

TRUCKING
Cattle are to be picked up from O'Neill building at conclusion of sale and no later than 5:00 p.m. Please contact sale manager if you need assistance with trucking.

BREEDING / GENETICS INFORMATION
A supplemental sheet will be available sale day with complete and up to date calving and breeding information. Announcements from the auction block take precedence over information listed in this sale book. Potential AM/NH carriers will be tested prior to sale day.

REFRESHMENTS: Will be available throughout the Expo.

EXPO SALE OFFICE
New in 2010, the buyer registration/clerking tables for ALL BREEDS will be in the meeting room in the O'Neill building, adjacent to the breeds office. There will be no clerking tables in Voinovich near sale rings. VETERINARIAN office will also be in the O'Neill meeting room.

PARKING
Saturday, March 20 only, special trailer parking for Ohio Beef Expo sale buyers will be available on the main part of the fairgrounds just east of the O'Neill Barn where the sale cattle are located. To access the parking area, cattle trailers should enter the fairgrounds off of 11th Avenue at the OHIO gate. This special trailer parking area is expected to fill up, so plan to arrive early. All other cattle trailers, including show and sale cattle exhibitor trailers and junior show trailers MUST park north of 17th Avenue after unloading. Visit www.ohiobeefexpo.com for details and map of grounds.

Lodging

Headquarters for the Ohio Beef Expo is the Ramada Plaza & Conference Center

Ramada Plaza
4900 Sinclair Rd.
Columbus, OH 43229
Phone: 614-846-0300
Ask for flat room rate

Comfort Inn
1213 E Dublin-Granville Rd
Columbus, OH 43229
(614) 885-4084



BEEF EXPO * Phone 614-294-4800
www.ohiobeefexpo.com

PLEASE BRING THIS CATALOG WITH YOU TO THE SALE

Angus Bulls - Lots 1 - 31

1

PARADISE LUTTON 816

Calved: 1/13/2008 Tattoo: P816 Reg. 16253673
Owned by: Paradise Cattle Co., Ashville, OH

Northern Improvement 4480 GF [AMF-NHF]
Exar Lutton 1831 [AMF-NHF]
Exar Saras Dream 9809
Bon View New Design 878 [AMF-NHF]
Paradise Mona 533
Paradise Mona 344

TC Stockman 365
Blackcap of R R 5367
A&b Yukon 7150 [AMF-NHF]
Saras Dream
B/R New Design 036 [AMF-NHF]
Bon View Gammer 85
L F New Trend 4100 [AMF-NHF]
Paradise Mona 907

| BW | WW | YW | MILK | \$W | \$F | \$G | \$B |
|------|-----|-----|------|--------|--------|-----|-----|
| +2.9 | .35 | +57 | .26 | +101 | .18 | +28 | .18 |
| | | | | +27.67 | +37.54 | | |

PARADISE LUTTON 816 is a 2yr old that we showed this past summer. He was the Res. Jr. Champion at both Ohio Preview Show and the Ohio State Fair. He is a bull that will catch your eye when you see him. He had a weaning ratio of 113 and his dam should turn pathfinder with her 2009 calf. B.W. 78 Herd Certified & Accredited John's Testing and he will be semen tested.



Lot 1 - Paradise Lutton 816

2

KINGSWAY MARATHON 105

Calved: 09/13/2008 Tattoo: 105 Reg. 16437669
Owned by: Kingsway Angus, Tiffin, OH

O C C Kirby 633K
B C Marathon 7022 [AMF-NHF]
Gibbet Hill Mignonne E37
Maple Lane Forever Ready 850
CHAMPION HILL Georgina 2608
Champion Hill Georgina 901

O C C Emblazon 854E
O C C Blackbird 785H
Papa Equator 2928 [AMF-NHF]
Gibbet Hill Mignonne TR 29
N Bar Emulation EXT [AMF-NHF]
Forever Lady 1120
D H D Traveler 6807 [AMF-NHF]
L L A Georgina 419

| CW | MARB | RE | FAT |
|-----|------|-------|-------|
| +13 | .05 | +1.15 | .05 |
| | | +2.26 | .05 |
| | | | +0.03 |

| BW | WW | YW | MILK | \$W | \$F | \$G | \$B |
|------|-----|-----|------|--------|--------|--------|--------|
| +4.6 | .05 | +48 | .05 | +89 | .05 | +19 | .05 |
| | | | | +19.79 | +28.93 | +17.97 | +39.79 |

KINGSWAY MARATHON 105
One of our favorite calves in 2008. Maternal 1/2 brother to 2009 Ohio Beef Expo Angus sale top seller. Marathon worked well on many cows but this mating came with perfect results. YW was 1655#, BW 80#, WW 749# Retaining 10% semen interest.



Lot 2 - Kingsway Marathon 105

3

DADOSKY BISMARCK 8140 (AMF-NHF)

Calved: 09/15/2008 Tattoo: 8140 Reg. 16186293
Owned by: The Dadosky Ranch, Wheelersburg, OH

G A R Grid Maker [AMF-NHF]
S A V Bismarck 5682 [AMF-NHF]
S A V Abigale 0451
Boyd On Target 1083 [AMF-NHF]
MADR Rosebud J716 407
Stevenson Rosebud J716

G D A R Traveler 044 [AMF-NHF]
G A R Precision 2536 [AMF-NHF]
Schoenes Fix It 826 [AMF-NHF]
S A V Abigale 6062
S A F 598 Bando 5175 [AMF]
Boyd Forever Lady 7095
Basin Rainmaker 654X
Stevenson Rosebud 4977

| CW | MARB | RE | FAT |
|----|------|-------|-------|
| +7 | .05 | +1.15 | .05 |
| | | +2.26 | .05 |
| | | | +0.03 |

| BW | WW | YW | MILK | \$W | \$F | \$G | \$B |
|----|-----|-----|------|--------|--------|--------|--------|
| +6 | .23 | +52 | .24 | +96 | .20 | +25 | .13 |
| | | | | +29.14 | +34.41 | +15.13 | +33.23 |

DADOSKY BISMARCK 8140

This powerful young bull is sired by SAV Bismarck 5682 who blends calving ease with growth, muscle and performance. His Dam is from the Rosebud Family and Stevenson Genetics. Bismarck 8140 has a gentle disposition and will add growth, muscle and performance to any herd. BW # 80. AMF/NHF. He will be semen tested.

4

SCC TUNDRA WCC 1480

Calved: 09/15/2008 Tattoo: 1480
Reg. 16380572

Owned by: Jon Weisel, Louisville, OH

S A V 8180 Traveler 004 [AMF-NHF-RDF]
S A V Payroll 5281 [AMF-NHF]
S A V Bessie Heiress 1184
Leachman Saughatchee 3000C [AMF-NHF]
Champion Hill Bell 1885
Champion Hill Bell 1025

Sitz Traveler 8180 [AMF-NHF]
Boyd Forever Lady 8003
S A F 598 Bando 5175 [AMF]
S A V Bessie Heiress 8067
N Bar Emulation EXT [AMF-NHF]
Leachman B C 7100
Champion Hill Keystone 819
Bells Reba Gal 325

| BW | WW | YW | MILK | \$W | \$F | \$G | \$B |
|------|-----|-----|------|--------|--------|-----|-----|
| +4.3 | .05 | +51 | .05 | +86 | .05 | +26 | .05 |
| | | | | +24.82 | +24.84 | | |

SCC TUNDRA WCC 1480

This big stout fall bull is ready to work for you. He is long sided, good hipped and sound. A full brother to this bull was Reserve National Champion at the National Junior Angus Show in 2003. Numerous brothers have been Champion at the Ohio Beef EXPO. BW 88 WW 798



Lot 4 - SCC Tundra WCC 1480

5

CLAYLICK RUN UPTOWN U102
 Calved: 09/15/2008 Tattoo: U102 Reg. +16528943
 Owned by: Claylick Run Farm, Newark, OH

Rito 616 of 4B20 6807 [AMF-NHF]
 Rito 112 of 2536 Rito 616 [AMF-NHF]
 G A R Precision 2536 [AMC-NHF]
 Twin Valley Precision E161 [NHC-AMF-RDF]
 Thomas Lady 3743 AAA +14399582 [NHF]
 Thomas Lady 7321 [AMF]

D H D Traveler 6807 [AMF-NHF]
 Rita 4B20 of 0FB1 Bando
 G A R Precision 1680 [AMC-NHC]
 G A R Ext 2104
 G A R Precision 1680 [AMC-NHC]
 W C C Blackcap C9 [RDC]
 N Bar Emulation EXT [AMF-NHF]
 Thomas Bando Lady 7447

| |
|-----------|
| CW |
| I+13 .05 |
| MARB |
| I+.42 .05 |
| RE |
| I+.03 .05 |
| FAT |
| I+.007.05 |

| BW | WW | YW | MILK | \$W | \$F | \$G | \$B |
|-----------|----------|----------|----------|--------|--------|--------|--------|
| I+1.6 .05 | I+52 .05 | I+94 .05 | I+19 .05 | +27.20 | +32.38 | +26.49 | +48.98 |

CLAYLICK RUN UPTOWN U102

A true stock bull! Stout made, deep bodied, attractive profile with pedigree and performance to back it up. His dam is the \$19,000 Thomas Lady 3743, the leading donor at Claylick Run. Maternal sister sare featured at Wayview Cattle Co., and Cliffside Farms. Individual birth weight 72#, weaning weight 717#, and Yearling Weight of 1222#. A herd sire for the commercial or purebred breeder.



Thomas Lady 3743 - Dam of Lot 5

6

DADOSKY BISMARCK 8125 (AMF-NHF)
 Calved: 09/17/2008 Tattoo: 8125 Reg. 16186291
 Owned by: The Dadosky Ranch, Wheelersburg, OH

G A R Grid Maker [AMF-NHF]
 S A V Bismarck 5682 [AMF-NHF]
 S A V Abigale 0451
 Boyd Beef Maker 3069 [AMC-NHF]
 Boyd Blackclass 6055
 G A R New Design 2808

G D A R Traveler 044 [AMF-NHF]
 G A R Precision 2536 [AMC-NHF]
 Schoenes Fix It 826 [AMF-NHF]
 S A V Abigale 0602
 C A Future Direction 5321 [AMC-NHC]
 Forever Lady 7120
 B/R New Design 036 [AMF-NHF]
 G A R 6807 Traveler 105

| |
|-----------|
| CW |
| I+13 .05 |
| MARB |
| I+.30 .05 |
| RE |
| I+.23 .05 |
| FAT |
| I+.002.05 |

| BW | WW | YW | MILK | \$W | \$F | \$G | \$B |
|----------|---------|---------|---------|--------|--------|--------|--------|
| +1.8 .23 | +52 .23 | +99 .20 | +26 .12 | +26.75 | +37.48 | +23.84 | +47.51 |

DADOSKY BISMARCK 8125

This outstanding bull is sired by SAV Bismarck 5682 who blends calving ease with muscle, growth and performance. His Dam is from the Boyd Blackclass Family of Boyd Beef Cattle. Bismarck 8125 has a gentle nature with sound structure. He will add growth, muscle and performance to any herd. BW # 80. AMF/NHF. He will be semen tested.

7

DEEP HOLLOW CORONA 312B (AMF)
 Calved: 12/02/2008 Tattoo: 312B Reg. 16423598
 Owned by: Rollin On Farms, Hillsboro, OH

Bon View New Design 1407 [AMF-NHF]
 SydGen 1407 Corona 2016 [AMC-NHF]
 V N A R Perfection 142F 180K [AMC-NHF]
 G A R Predestined [AMF-NHF]
 Deep Hollow Evergreen 513
 E F Evergreen 3296

B/R New Design 036 [AMF-NHF]
 Bon View Pride 664
 GAR Precision 1680 [AMC-NHC]
 V N A R Perfection 142F
 B/R New Design 036 [AMF-NHF]
 G A R Ext 4206
 E F Eaglestone
 E F Evergreen 9159

| |
|-----------|
| CW |
| I+15 .05 |
| MARB |
| I+.82 .05 |
| RE |
| I+.30 .05 |
| FAT |
| I+.007.05 |

| BW | WW | YW | MILK | \$W | \$F | \$G | \$B |
|----------|----------|----------|----------|--------|--------|--------|--------|
| +2.5 .05 | I+48 .05 | I+88 .05 | I+25 .05 | +25.83 | +27.94 | +37.86 | +60.95 |

DEEP HOLLOW CORONA 312B

If you are looking for a genetic improver, look no further! Great balance across the EPD's, and +60.95 on \$B. If you need an older bull to increase your genetic value, look this one over.

8

DEEP HOLLOW PREDESTINED 317D
 Calved: 01/01/2008 Tattoo: 317D Reg. 16231882
 Owned by: Rollin On Farms, Hillsboro, OH

B/R New Design 036 [AMF-NHF]
 G A R Predestined [AMF-NHF]
 G A R Ext 4206
 S A V 8180 Traveler 004 [AMF-NHF-RDF]
 Deep Hollow Blackbird D603
 Champion Hill Phyllis 1652

V D A R New Trend 315 [AMF-NHF]
 B/R Blackcap Empress 76
 N Bar Emulation EXT [AMF-NHF]
 G A R 6807 Traveler 1432
 Sitz Traveler 8180 [AMF-NHF]
 Boyd Forever Lady 8003
 S A F Neutron [AMF-NHF]
 Champion Hill Blackbird 33

| |
|-----------|
| CW |
| I+20 .05 |
| MARB |
| I+.66 .05 |
| RE |
| I+.28 .05 |
| FAT |
| I+.069.05 |

| BW | WW | YW | MILK | \$W | \$F | \$G | \$B |
|----------|---------|---------|---------|--------|--------|--------|--------|
| +3.6 .33 | +54 .25 | +97 .19 | +26 .20 | +25.94 | +34.64 | +24.84 | +52.70 |

DEEP HOLLOW PREDESTINED 317D

An interesting combination - Predestined on a "004" female, going back to the famous Champion Hill Blackbird 33. What a genetic package, with a great set of EPD's!

9

HFS MARATHON 911
 Calved: 01/02/2009 Tattoo: 911 Reg. +16346548
 Owned by: HFS Angus, Radnor, OH

O C C Kirby 633K
 B C Marathon 7022 [AMF-NHF]
 Gibbet Hill Mignonne E37
 Leachman Saughatchee 3000C [AMF-NHF]
 Dameron Pride 5107 [NHF]
 Dameron Pride 2117 [AMF]

O C C Emblazon 854E
 O C C Blackbird 785H
 Papa Equator 2928 [AMF-NHF]
 Gibbet Hill Mignonne TR 29
 N Bar Emulation EXT [AMF-NHF]
 Leachman B C 7100
 Dameron P V F Raptor 702 [NHF]
 M B Bradmar Pride 6049

| BW | WW | YW | MILK | \$W | \$F | \$G | \$B |
|-----------|----------|----------|----------|--------|--------|-----|-----|
| I+4.6 .05 | I+52 .05 | I+98 .05 | I+20 .05 | +23.00 | +26.42 | | |

HFS MARATHON 911

This January standout by the Denver Champion B C Marathon 7022 puts together a great combination of pedigree, performance and eye-appeal. His dam Dameron Pride 5107 was the Supreme Champion at the 2006 Michigan Beef Expo. Pedigree Free for AM-NH.

10

DEEP HOLLOW TRAVELER DH59
 Calved: 01/06/2009 Tattoo: DH59 Reg. 16231883
 Owned by: Rollin On Farms, Hillsboro, OH

Sitz Traveler 8180 [AMF-NHF]
 S A V 8180 Traveler 004 [AMF-NHF-RDF]
 Boyd Forever Lady 8003
 B/R New Design 036 [AMF-NHF] B/R
 Shermans Blackcap 162 [AMF]
 Circle A Blackcap 8134

G D A R Traveler 71 [AMF-NHF]
 Sitz Everelda Entense 1137
 A A R New Trend
 S V F Forever Lady 57D
 V D A R New Trend 315 [AMF-NHF]
 Blackcap Empress 76
 SVF Gdar 216 LTD
 Finks Blackcap 4224 111 692

| BW | WW | YW | MILK | \$W | \$F | \$G | \$B |
|----------|---------|---------|---------|--------|--------|-----|-----|
| +3.3 .31 | +52 .24 | +97 .19 | +25 .20 | +25.29 | +35.43 | | |

DEEP HOLLOW TRAVELER DH59

The tremendous growth potential this bull's calves will have is no surprise with his combination of "004" and "036."



HFS Marathon 911 - Lot 9



FSC STRATEGY

Calved: 01/15/09 Tattoo: 726W Reg. 16486667

Owned by: Ferguson Show Cattle, Chardon, OH

O C C Legend 616L
B C Lookout 7024 [AMF-NHF]
Gibbet Hill Mignonne E37

D H D Traveler 6807 [AMF-NHF]
Coleman Everelda Entense 726
Coleman Everelda Entense 434 [NHC-AMF]

O C C Emblazon 854E
O C C Blackbird 632J
Papa Equator 2928 [AMF-NHF]
Gibbet Hill Mignonne TR 29
Q A S Traveler 23-4 [AMF-NHF]
Bemindful Maid D H D 0807
G A R Precision 1680 [AMC-NHC]
Sitz Everelda Entense 4789

| |
|-----------|
| CW |
| I+13 .05 |
| MARB |
| I+.22 .05 |
| RE |
| I+.37 .05 |
| FAT |
| I+.011.05 |

FSC STRATEGY is a BC Lookout son that is moderate framed, big boned, clean fronted, and hairy, with a low birth weight. Strategy is a belly dragger with a sweet disposition.



FSC Strategy - Lot 11



PARADISE FREEDOM 908

Calved: 01/18/09 Tattoo: P908 Reg. 16514465

Owned by: Paradise Cattle Co., Ashville, OH

Connealy Forefront [AMF-NHF]
TC Freedom 104 [AMF-NHF]
T C Ruby 9095

K C F Bennett Coalition SCC [AMF-NHF]
Paradise Madame 530
Paradise Madame 110

Connealy Frontline [AMF-NHF]
Eileen Heartland Conanga6443
TC Stockman 365
TC Ruby 4068
Sitz Alliance 6595 [AMF-NHF]
Pleasant Pill of Conanga
TC Stockman
Ohio's Madame Franco 610

| BW | WW | YW | MILK |
|-------|-----|----------|----------|
| I+3.3 | .38 | I+46 .36 | I+83 .05 |
| I+21 | .29 | | |

| \$W | \$F | \$G | \$B |
|--------|--------|-----|-----|
| +23.42 | +23.81 | | |

PARADISE FREEDOM 908 is a very attracted Jan. yearling bull. 908 is a bull that would work well on club calf cows or larger frame females. B.W. 72. Herd Certified & Accredited. John's Testing and he will be semen tested.



FSC APPROVED

Calved: 01/21/09 Tattoo: 221W Reg. 16495398

Owned by: Ferguson Show Cattle, Chardon, OH

G 13 Structure [AMF-NHF]
G 13 Traveler 9428

FSC Polleys 004

S A V 8180 Traveler 004 [AMF-NHF-RDF]
Basin Rainmaker 654X
Coleman Polly 221

TC Stockman
TC Pride 0014
Oneills Renault 982
G13 Prosperity Traveler 9266
Sitz Traveler 8180 [AMF-NHF]
Boyd Forever Lady 8003

Coleman Polly 904

FSC APPROVED has solid genetics - a G-13 Structure son out of a Basin Rainmaker 654x X 004 dam out of the famed Coleman Angus Herd. Genotype and Phenotype - upgrade your herd with this one!



FSC Approved - Lot 13



JOHNSON RITO 107

Calved: 01/24/09 Tattoo: 107 Reg. 16350142

Owned by: Anderson Farms, Lisbon, OH

Rito 112 of 2536 Rito 616 [AMF-NHF]
Rito 4612 of Rita 8G23 112 [AMF-NHF]
Rita 8G23 of 6M26 GPT [AMF-NHF]

W C C Special Design L309 [AMF-NHF]
Johnson Katinka P13
Masterfare Katinka 3086

Rito 616 of 4B20 6807 [AMF-NHF]
G A R Precision 2536 [AMC-NHF]
Gardens Prime Time [AMF-NHF]
Rita 6M26 of 9FB2 GT Max
Bon View New Design 878 [AMF-NHF]
N Bar Primrose 2424
White Oak Precise 6002 [AMC-NHC]
High Field Katinka 127

JOHNSON RITO 107
A pedigree full of Angus greats - Tremendous genetic potential!
Will be AM and NH tested prior to sale.



WCC Tonka 109 - Lot 15



WCC TONKA 109

Calved: 01/25/09 Tattoo: 109 Reg. +16512837

Owned by: Jon Weisel, Louisville, OH

B/R New Design 323
P V F New Horizon 001 [AMF-NHF]
Hyline Ellen 410

Famous 7001 [AMF]
Champion Hill Phyllis 1868
Champion Hill Phyllis 611

B/R New Design 036 [AMF-NHF]
B/R Ruby of Tiffany 155
Hyline Travel Agent [AMF-NHF]
Hyline Ellen 9062
S A F Fame [AMF-NHF]
T K Karen 1369
Leachman Saugahatchee 3000C [AMF-NHF]
Champion Hill Blackbird 33

| BW | WW | YW | MILK |
|-------|-----|----------|----------|
| I+4.2 | .05 | I+51 .05 | I+90 .05 |
| I+20 | .05 | | |

| \$W | \$F | \$G | \$B |
|--------|--------|-----|-----|
| +22.58 | +28.77 | | |

WCC TONKA 109
This stout made January bull calf goes back to the famous Champion Hill cow family. A full sister was Grand Champion Female at the Ohio Beef EXPO for Dillon Stertzach, RSFF Phyllis 2028. She later went on to win her division at the National Junior Angus Show and went on to be Grand Champion Female at the 2003 NAILE for Dillon. Another full sister, Echo Dell Phyllis went on to be Reserve Grand Champion at the 2006 NWSS Jr. Show. Don't pass up this opportunity to add these champion genetics to your herd. BW 83 WW 833



Kingsway Net Worth 113 - Lot 16



KINGSWAY NET WORTH 113
 Calved: 01/26/09 Tattoo: 113 Reg. 16427237
 Owned by: Kingsway Angus, Tiffin, OH

S A V 8180 Traveler 004 [AMF-NHF]
 S A V Net Worth 4200 [AMF-NHF]
 S A V May 2410
 Traveler 18 B C A R
 W C C Blackcap N210
 W C C Blackcap I501

Sitz Traveler 8180 [AMF-NHF]
 Boyd Forever Lady 8003
 S A F 598 Bando 5175 [AMF]
 S A V May 6269
 D H D Traveler 6807 [AMF-NHF]
 Leachman Queen Mother 7044
 N Bar Emulation EXT [AMF-NHF]
 Premier Blackcap 6276A [RDC]

| BW | WW | YW | MILK |
|------|-----|------|------|
| +4.0 | .05 | I+51 | .05 |
| I+98 | .05 | I+23 | .05 |

| \$W | \$F | \$G | \$B |
|--------|--------|-----|-----|
| +21.23 | +36.85 | | |

KINGSWAY NET WORTH 113 has a unique blend of 6807, EXT, 004, and 5175 genetics into this bull. 84# birth weight on this very attractive bull. Put this bull on purebred or commercial cows and you'll be as excited about him as we are. Retaining 10% semen interest.



JOHNSON BEXTOR 27
 Calved: 01/27/09 Tattoo: 27 Reg. 16350140
 Owned by: Anderson Farms, Lisbon, OH

B A R Ext Traveler 205 [AMF-NHF]
 C R A Bextor 872 5205 608 [AMF-NHF]
 Cra Lady Jaye 608 498 S Easy
 Alberda Traveler 416 [AMF-NHF]
 Toeppen Lucy 3017
 Thomas Lucy 0193

N Bar Emulation EXT [AMF-NHF]
 B A R Queen Traveler 3015
 G A R Sleep Easy 1009 [AMF-NHF]
 H H F 917 Lady 975 498
 D H D Traveler 6807 [AMF-NHF]
 Alberda Queen Kimberly 222
 B/R New Design 036 [AMF-NHF]
 Thomas Lucy 6205

| BW | WW | YW | MILK |
|-------|-----|------|------|
| I+2.8 | .05 | I+43 | .05 |
| I+82 | .05 | I+29 | .05 |

| \$W | \$F | \$G | \$B |
|--------|--------|-----|-----|
| +24.04 | +23.97 | | |

JOHNSON BEXTOR 27
 Bextor daughters are proven performers, backed by Traveler genetics on the bottom side and the powerful Thomas Lucy cow family.



KCC GRIDMAKER 119
 Calved: 02/03/09 Tattoo: 119 Reg. 16394280
 Owned by: Kasler Cattle Co., Millfield, OH

G D A R Traveler 044 [AMF-NHF]
 G A R Grid Maker [AMF-NHF]
 G A R Precision 2536 [AMC-NHF]
 Champion Hill 3000C 831
 Wayview Lucky Boy 930
 K C C Lucky Erica

D H D Traveler 6807 [AMF-NHF]
 G D A R Blackcap Lady 840
 G A R Precision 1680 [AMC-NHC]
 G A R Ext 2104
 Leachman Saughatchee 3000C [AMF-NHF]
 Lemmon Rose 5029

| BW | WW | YW | MILK |
|-------|-----|------|------|
| I+5.4 | .05 | I+49 | .05 |
| I+91 | .05 | I+13 | .05 |

| \$W | \$F | \$G | \$B |
|--------|--------|-----|-----|
| +15.94 | +30.54 | | |

KCC GRIDMAKER 119:
 Dam has been the cornerstone of our young and progressive herd. We had a full sister to KCC Gridmaker 119 that was the high seller and Champion of 2005 Eastern Ohio Spring Sale that went on to be a high-quality productive cow for Kingsway Angus and Advance Cattle Co.
 Vaccinations Up-To-Date and will have a breeding soundness exam



SHAWNEE'S BIG BOY
 Calved: 02/08/09 Tattoo: 2609 Reg. 16311546
 Owned by: Shawnee Farm, Bowling Green, OH

TC Stockman 365
 Northern Improvement 4480 GF [AMF-NHF]
 Blackcap of R R 5367

Bon View New Design 878 [AMF-NHF]
 Homecroft Jasmine 7507
 Homecroft Erica 32111

TC Stockman
 TC Pride 0014
 R R Vantage 3352
 Blackcap of R R 0238
 B/R New Design 036 [AMF-NHF]
 Bon View Gammer 85
 Homecroft Freelancer
 Homecroft Erica 3211

SHAWNEE'S BIG BOY is out of a big, broody, Bon View New Design cow and carries many of the same traits of his sire, Northern Improvement. Great disposition, this bull has been in a halter since he was two weeks old, and is shown and handled by a 12 year old. He is extremely easy to work with. Cow and calf were Champion Cow/Calf pair at the West Central Ohio District show, where he was also named Reserve Champion Junior Bull. The cow was Reserve Champion, Supreme Female at the Wood County Fair in 2009. A very stylish bull with extremely good hair coat and unbelievable growth rate. He will make an excellent addition to any program and will work well with your heifers for easy calving.



Shawnee's Big Boy - Lot 19



PARADISE FREEDOM 928
 Calved: 02/08/09 Tattoo: P928 Reg. +16504511
 Owned by: Paradise Cattle Co., Ashville, OH

Connealy Forefront [AMF-NHF]
 TC Freedom 104 [AMF-NHF]
 T C Ruby 9095

Krugerrand Merger 34 [RDF]
 Paradise Erica 135
 Paradise Erica Q F 604

Connealy Frontline [AMF-NHF]
 Eileen Heartland Conanga6443
 TC Stockman 365
 TC Ruby 4068

Krugerrand of Donamere 490 [AMF-NHF]
 Ankony 5G00 Blackbird GC017
 Rito 9FB3 of SH11 Fullback [AMF-NHF]
 Q F Erica Eilene 368

| BW | WW | YW | MILK |
|-------|-----|------|------|
| I+3.6 | .40 | I+54 | .38 |
| I+94 | .05 | I+35 | .30 |

| \$W | \$F | \$G | \$B |
|--------|--------|-----|-----|
| +26.75 | +31.60 | | |

PARADISE FREEDOM 928 is a full brother to the Freedom 2yr. old bull that we sold last year. You will like this bulls disposition along with his performance pedigree. B.W. 78 Herd Certified & Accredited. John's Testing and he will be semen tested.



Paradise Freedom 754 - full brother to Lot 20

21 **RAINS LOOKOUT LODFR**
 Calved: 02/09/09 Tattoo: R89 Reg. 16389877
 Owned by: Rains Angus, Mercer, PA

O C C Legend 616L
 B C Lookout 7024 [AMF-NHF]
 Gibbet Hill Mignonne E37

Connealy Dateline
 Rains Charlie Della DFRTCH
 Rains Missy Charlie FRTCH

| BW | WW | YW | MILK | \$W | \$F | \$G | \$B |
|------|-----|-----|------|--------|--------|--------|--------|
| +1.4 | .34 | +42 | .25 | +76 | .16 | +13 | .15 |
| | | | | +24.14 | +18.59 | +23.85 | +41.01 |

O C C Emblazon 854E
 O C C Blackbird 632J
 Papa Equator 2928 [AMF-NHF]
 Gibbet Hill Mignonne TR 29
 D H D Traveler 6807 [AMF-NHF]
 Ella Ella of Conanga [AMF]
 Famous 7001 [AMF]
 Rains Missy Charlie RTC

| CW | MARB | RE | FAT |
|-----|------|-----|------|
| +10 | .05 | +23 | .05 |
| +37 | | | .05 |
| | | | +003 |

RAINS LOOKOUT LoD-FRTCH: Here is a heavy muscled, big volumed son of "Lookout". His dam by "Dateline" stems from our Charlie cow family which has excelled in productivity and longevity for us.
 BW 72 lb.unassisted 205 day adj wt 723 lb.

22 **NET PRESENT VALUE BUBBA 908**
 Calved: 02/10/09 Tattoo: 908 Reg. 16418765
 Owned by: McConnel Creek Cattle, Lucasville, OH

N Bar Prime Time D806 [AMF-NHF]
 Sinclair Net Present Value [AMF-NHF]
 Ideal 4465 of 6807 4286 [AMF-NHF]

G A R Predestined [AMF-NHF]
 Claylick Run Rita T021
 Bainbridge Rita J039 [AMF]

Gardens Prime Time [AMF-NHF]
 N Bar Miss Emulous A404
 D H D Traveler 6807 [AMF-NHF]
 E E 4286 of Ideal 2240 1254
 B/R New Design 036 [AMF-NHF]
 G A R EXT 4206
 Rito 3X25 of 5H11 EXT [AMF]
 Rita 6F39 of 3B16 Rito 353

| CW | MARB | RE | FAT |
|-----|------|-----|------|
| +18 | .05 | +57 | .05 |
| | | | +41 |
| | | | +032 |

NET PRESENT VALUE BUBBA 908
 The calving ease bull, Sinclair Net Present Value, adds volume and fleshing ability without sacrificing growth. The sire of this 908 bull has a -1.8 BW, yet good growth and milk EPDs. 908's dam is by Predestined out of Bainbridge Rita J039. Predestined, know for superior daughters, is one of Select Sire's best. J039 is known for her good looks and remarkable fertility, and has passed both on to 908's dam. Look seriously at this bull for calving ease with extra growth. His calves should have eye appeal with lots of volume. Owned with Maynard Farms.

23 **RAINS MANDATED MDLE722**
 Calved: 02/13/09 Tattoo: R119 Reg. 16389880
 Owned by: Rains Angus, Mercer, PA

S A V 8180 Traveler 004 [AMF-NHF-RDF]
 S A V Mandan 5664 [AMF-NHF]
 S A V Abigale 0451

Leachman Explorer [AMF-NHF]
 Rains Dream Girl LE722S
 Rains Dream Girl 722 Sigimp

Sitz Traveler 8180 [AMF-NHF]
 Boyd Forever Lady 8003
 Schoenes Fix It 826 [AMF-NHF]
 S A V Abigale 0662
 N Bar Emulation EXT [AMF-NHF]
 Leachman Blackcap 9006
 V D A R Traveler 722 [AMF-NHF]
 Rains Fashion Girl Sigimp

| BW | WW | YW | MILK | \$W | \$F | \$G | \$B |
|------|-----|-----|------|--------|--------|--------|--------|
| +3.8 | .35 | +45 | .26 | +82 | .13 | +25 | .13 |
| | | | | +22.75 | +23.21 | +13.98 | +36.75 |

| CW | MARB | RE | FAT |
|-----|------|-----|------|
| +16 | .05 | +18 | .05 |
| | | | +31 |
| | | | +047 |

RAINS MANDATED MDLE722 is a structurally correct son of "Mandan" who is nicely balanced. His Dam by "Explorer" is from our Dream Girl cow family which has produced many champions for us. Mandated was Reserve Calf Champion at the 2010 PA Farm Show where other Dream Girl progeny were also Late Jr Calf Champion and Reserve Jr Champion females. Really quiet and easy going bull.
 Dam is 8 at 103 for weaning. BW 78 lb unassisted
 205 day adj weight was 769 lb.



24 **PARADISE NEW LOOK 934**
 Calved: 02/15/09 Tattoo: P934 Reg. 16504512
 Owned by: Paradise Cattle Co., Ashville, OH

Bon View New Design 1407 [AMF-NHF]
 EXAR New Look 2971 [AMF-NHF]
 N Bar Primrose 2424

L F New Trend 4100 [AMF-NHF]
 Paradise Mona 532
 Paradise Mona 229

B/R New Design 036 [AMF-NHF]
 Bon View Pride 664
 Emulation 31 [DWF-RDF]
 Primrose N Bar 9962
 V D A R New Trend 784
 Lazy Four Lucy 003
 TC Stockman 365
 Paradise Mona 861

| BW | WW | YW | MILK | \$W | \$F | \$G | \$B |
|------|-----|-----|------|--------|--------|-----|-----|
| +3.4 | .38 | +51 | .36 | +89 | .05 | +25 | .26 |
| | | | | +25.72 | +27.78 | | |

Paradise New Look 934 is a stout, correct made yearling bull that has the potentials to be a good show bull. B.W. 76 Weaning ratio of 106. Herd Certified & Accredited. John's Testing and he will be semen tested.

25 **COOPER'S BR CHAMP**
 Calved: 02/20/09 Tattoo: C10W Reg. 16306904
 Owned by: Cooper Angus Farms, Mount Gilead, OH

BR Midland [AMF-NHF]
 Advance Mid 884 30T
 Hope Hill Miss Dunn 884

Champion Hill Gemstone
 Blackcap C A F 464
 Sugarwood Blackcap 464

Twin Valley Precision E161 [NHC-AMF-RDF]
 BR Royal Lass 7036-19
 N Bar Emulation EXT [AMF-NHF]
 Hope Hill Miss Dunn 846
 Century Touchstone 131
 Stonylonesome Blackcap 025
 Pine Drive Big Sky [AMF-NHF]
 Rally Blackcap 460

COOPER'S BR CHAMP
 Here is a chance to improve your herd with a good footed, big topped, extremely thick son of the 2008 Ohio State Fair and Keystone Reserve champion bull - Advance Mid 884, who is one of Advance Cattle Company's best. BR Champ was himself a 4 time calf champion or reserve in 2009 - Ohio State Fair, Ohio Preview, Heart of Ohio, and Miami Valley.



26 **MAF TEQUILIA 1349**
 Calved: 02/23/09 Tattoo: 1349 Reg. 16544414
 Owned by: Mullett Angus, OH

S A F 598 Bando 5175 [AMF]
 S A V 5175 Bando 1024
 Champion Hill Sleepy Miss

Summitcrest Hi Flyer 3B18 [AMF-NHF]
 Summitcrest Elite 076K AAA 13596873
 Summitcrest Elite 086H

Bon View Bando 598 [AMF]
 S A F Royal Lass 1002
 G A R Sleep Easy 1009 [AMF-NHF]
 Stonylonesome Miss 123
 Hoff Hi Flyer S C 7134 [AMF-NHF]
 Summitcrest Lass 229Y
 TC Stockman 365
 Summitcrest Elite 042E

| BW | WW | YW | MILK | \$W | \$F | \$G | \$B |
|------|-----|-----|------|--------|--------|-----|-----|
| +3.1 | .05 | +47 | .05 | +84 | .05 | +22 | .05 |
| | | | | +24.49 | +24.40 | | |

MAF TEQUILIA 1349
 This young bull has lots of muscle and depth of body in a very stylish package. He will make an outstanding herd bull prospect.

27 **MAF SANGRIA 9669**
 Calved: 03/15/09 Tattoo: 9669 Reg. 16548767
 Owned by: Mullett Angus OH

S A V 8180 Traveler 004 [AMF-NHF-RDF]
 S A V Mandan 5664
 S A V Abigale 0451

G A R Predestined [AMF-NHF]
 MAF Blackbird 1966
 J Bar J 1176 Blackbird 196

Sitz Traveler 8180
 Boyd Forever Lady 8003
 Schoenes Fix It 826
 S A V Abigale 6062
 B/R New Design 036
 G A R Ext 4206
 Bon View Spectrum 1176
 J Bar J Precise Blackbird 820

MAF SANGRIA 9669
 Looking for a big topped, deep bodied, muscular bull? This bull has all of that plus a power packed pedigree to go with it. Look this bull over on sale day! Will be tested for AM and NH.

28 **KCC CRUSH 209**
 Calved: 03/19/09 Tattoo: 209 Reg. 16390261
 Owned by: Kasler Cattle Company, Millfield, OH

S A F 598 Bando 5175 [AMF]
 S A V 5175 Bando 0699 [AMF-NHF]
 L L A Georgina 419

KCC Blackbird 35
 Century Touchstone 131
 S V F Blackbird 500

Bon View Bando 598 [AMF]
 S A F Royal Lass 1002
 G A R Sleep Easy 1009 [AMF-NHF]
 Lyons Georgina 2165
 G A R Grid Maker [AMF-NHF]
 BR Erica 646-469

B V F Blackbird 51B

| BW | WW | YW | MILK | \$W | \$F | \$G | \$B |
|-------|-----|------|------|--------|--------|------|-----|
| I+4.9 | .05 | I+51 | .05 | I+95 | .05 | I+16 | .05 |
| | | | | +18.30 | +33.79 | | |

KCC CRUSH 209 is a son of SAV 0699 that will instill performance and maternal traits in any herd.
 Vaccinations Up-To-Date and will have a breeding soundness exam

29 **KINGSWAY MARATHON 119**
 Calved: 03/23/09 Tattoo: 119 Reg. +16430612
 Owned by: Kingsway Angus, Tiffin, OH


O C C Kirby 633K
 B C Marathon 7022 [AMF-NHF]
 Gibbet Hill Mignonne E37

Northern Improvement 4480 GF [AMF-NHF]
 Kingsway Amarillo 153
 Kingsway Amarillo 106

O C C Emblazon 854E
 O C C Blackbird 785H
 Papa Equator 2928 [AMF-NHF]
 Gibbet Hill Mignonne TR 29
 TC Stockman 365
 Blackcap of R R 5367
 VDAR New Trend 3587
 Kingsway Shania 159

| BW | WW | YW | MILK | \$W | \$F | \$G | \$B |
|-------|-----|------|------|--------|--------|------|-----|
| I+4.0 | .05 | I+52 | .05 | I+83 | .05 | I+21 | .05 |
| | | | | +26.12 | +21.56 | | |

KINGSWAY MARATHON 119
 This bull comes out of our ET program and one of our top cows. Truly a bull with eye appeal, depth, and thickness. 82# birth weight, 680# actual WW. A nice blend of Northern Improvement and Marathon genetics.



Kingsway Marathon 119 - Lot 29

30 **KINGSWAY NEW HORIZON 123**
 Calved: 03/31/09 Tattoo: 123 Reg. 16433112
 Owned by: Kingsway Angus, Tiffin, OH

B/R New Design 036 [AMF-NHF]
 B/R Ruby of Tiffany 155
 Hyline Travel Agent [AMF-NHF]
 Hyline Ellen 410

Northern Improvement 4480 GF [AMF-NHF]
 Kingsway Amarillo 153
 Kingsway Amarillo 106

P V F New Horizon 001 [AMF-NHF]
 Hyline Ellen 410

| BW | WW | YW | MILK | \$W | \$F | \$G | \$B |
|-------|-----|------|------|--------|--------|------|-----|
| I+3.1 | .05 | I+52 | .05 | I+90 | .05 | I+26 | .05 |
| | | | | +26.92 | +28.39 | | |

KINGSWAY NEW HORIZON 123
 One of our favorite 2009 calves. This bull has extreme eye appeal. 82# birth weight. 655 WW. This bull will work well in any cow herd. Muscle, depth, and nice top are features you will find in this bull.



Kingsway New Horizon 123 - Lot 30

31 **KCC GATOR 219**
 Calved: 04/10/09 Tattoo: 219 Reg. 16390259
 Owned by: Kasler Cattle Company, Millfield, OH

S A V 8180 Traveler 004 [AMF-NHF-RDF]
 S A V 004 Traveler 4836 [AMF-NHF]
 CHAMPION HILL Lady 2245 [NHC-AMF]

S A V 5175 Bando 0699 [AMF-NHF]
 Clara 121 of Woodlawn

Sitz Traveler 8180 [AMF-NHF]
 Boyd Forever Lady 8003
 Leachman Saugahatchee 3000C [AMF-NHF]
 Champion Hill Lady 391 [NHC-AMF]
 S A F 598 Bando 5175 [AMF]
 L L A Georgina 419
 S A F Focus of E R [AMF-NHF]
 Clara 9197 B C B R

| BW | WW | YW | MILK | \$W | \$F | \$G | \$B |
|-------|-----|------|------|--------|--------|------|-----|
| I+3.9 | .05 | I+55 | .05 | I+95 | .05 | I+23 | .05 |
| | | | | +25.17 | +32.22 | | |

KCC GATOR 219:
 An explosive growth and performance bull by SAV 004 Traveler 4836, Gator, out of an 0699 two-year-old dam. He has extreme thickness, muscle shape and bone in a great eye-appealing package.
 Vaccinations Up-To-Date and will have a breeding soundness exam



Angus Heifers - Lots 32 - 55

32 **CHAMPION HILL PEG 4447**
 Calved: 01/06/05 Tattoo: 4447 Reg. +15029307
 Owned by: DC Angus, West Chester, OH

Sitz Traveler 8180 [AMF-NHF]
 S A V 8180 Traveler 004 [AMF-NHF-RDF]
 Boyd Forever Lady 8003

Champion Hill Tecumseh
 Champion Hill Peg 2093
 T C Peg 9100

G D A R Traveler 71 [AMF-NHF]
 Sitz Everelda Entense 1137
 A A R New Trend
 S V F Forever Lady 57D
 N Bar Emulation EXT [AMF-NHF]
 Champion Hill Blackbird 33
 Leachman Prompter [AMF-NHF]
 T C Peg 6108

| | |
|------|-----------|
| CW | I+14 .05 |
| MARB | I+.17 .05 |
| RE | I-.06 .05 |
| FAT | I+.060.05 |

| BW | WW | YW | MILK | \$W | \$F | \$G | \$B |
|-----------|----------|----------|----------|--------|--------|-------|--------|
| I+4.0 .05 | I+48 .05 | I+88 .05 | I+21 .05 | +21.78 | +27.94 | +5.62 | +27.82 |



Champion Hill Peg 4439 - full sister to Lot 32

CHAMPION HILL PEG 4447
 Her full sister was the Reserve Cow/Calf female at the Atlantic National and Ohio Preview for us in 2008, and Peg 4447 is just as powerful. Sired by the highly sought after "004," and very nicely balanced in her EPD's, this young cow, along with her calf by Stryker due 3/7/10, will make a great asset to any herd.

33 **J M PRIMROSE J 535**
 Calved: 02/28/05 Tattoo: 535 Reg. 15146704
 Owned by: Mullett Angus, Coshocton, OH

Rito 616 of 4B20 6807 [AMF-NHF]
 Millers Bullseye J373 [AMF-NHF]
 Miss Blackcap H369 of M A F

Misty View Oscar 549
 River Valley Primrose 53
 Wayview Primrose 14

D H D Traveler 6807 [AMF-NHF]
 Rita 4B20 of 0FB1 Bando
 Bon View Bando 598 [AMF]
 Miss Blackcap F338 of M A F
 G D A R Oscar 711 [AMF-NHF]
 Misty View Georgina 422
 V D A R Lucys Boy [AMF-NHF]
 Wayview Primrose 7

J M PRIMROSE J 535
 This young female has been an outstanding producer for us as we have retained her heifers as replacements. She has a beautiful udder and disposition is excellent. AI bred to Rito 616 on 5-28-09, pasture exposed after 6-10-09 to Misty View New Level 116.

| | |
|------|-----------|
| CW | I+16 .05 |
| MARB | I+.54 .05 |
| RE | I+.43 .05 |
| FAT | I+.035.05 |

| BW | WW | YW | MILK | \$W | \$F | \$G | \$B |
|----------|---------|---------|---------|--------|--------|--------|--------|
| +1.2 .33 | +44 .24 | +93 .22 | +31 .18 | +25.23 | +34.51 | +29.97 | +55.12 |

34 **DEEP HOLLOW ELBA 67DH**
 Calved: 09/26/08 Tattoo: 67DH Reg. 16204597
 Owned by: Deep Hollow Angus, Hillsboro, OH

B/R New Design 036 [AMF-NHF]
 G A R New Design 5050 [AMF-NHF]
 G A R Precision 706 [NHC-AMF]

E F Bushwacker 1280
 E F Elba 3182 [NHF]
 E F Elba of Finks 5522-6148

V D A R New Trend 315 [AMF-NHF]
 B/R Blackcap Empress 76
 G A R Precision 1680 [AMC-NHC]
 G A R Ext 2114
 B C C Bushwacker 41-93 [AMF-NHF]
 G A R Precision 2168 [AMF]
 Finks 5522-6148
 S V F Elba 24C

| | |
|------|-----------|
| CW | I+16 .05 |
| MARB | I+.54 .05 |
| RE | I+.43 .05 |
| FAT | I+.035.05 |

| BW | WW | YW | MILK | \$W | \$F | \$G | \$B |
|----------|---------|---------|---------|--------|--------|--------|--------|
| +1.2 .33 | +44 .24 | +93 .22 | +31 .18 | +25.23 | +34.51 | +29.97 | +55.12 |

DEEP HOLLOW ELBA 67DH
 AI bred to Bextor on 12/23/09. Exposed to Deep Hollow Corona D312 on 1/15/10. Breeding updates at time of sale.

35 **DEEP HOLLOW RITA 69DH (AMF-NHF)**
 Calved: 10/01/08 Tattoo: 69DH Reg. 16204601
 Owned by: Deep Hollow Angus, Hillsboro, OH

C A Future Direction 5321 [AMC-NHC]
 Toebben Direction 4095
 Toebben Forever Lady 1134

BR Midland [AMF-NHF]
 FQR Lindsey of Midland 22D [AMF]
 E F Rita 883

G A R Precision 1680 [AMC-NHC]
 C A Miss Power Fix 308 [AMF]
 B/R New Design 036 [AMF-NHF]
 K M K Forever Lady 1118
 Twin Valley Precision E161 [NHC-AMF-RDF]
 BR Royal Lass 7036-19
 Sitz Traveler 9929
 E F Rita 650

| | |
|------|-----------|
| CW | I+10 .05 |
| MARB | I+.35 .05 |
| RE | I+.19 .05 |
| FAT | I+.001.05 |

| BW | WW | YW | MILK | \$W | \$F | \$G | \$B |
|----------|---------|---------|---------|--------|--------|--------|--------|
| +3.3 .30 | +46 .20 | +83 .19 | +21 .11 | +23.60 | +23.81 | +26.00 | +44.19 |

DEEP HOLLOW RITA 69DH
 AI bred to Bextor on 11/13/09. Exposed to Deep Hollow Corona D312 on 1/15/10. Breeding updates at time of sale.



36 **GAHLER VICTORIA 5832**
 Calved: 11/23/08 Tattoo: 5832 Reg. 16321105
 Owned by: Gahler Farms, Graytown, OH

Jacs Emulation 6583
 Gahler Emulation Double X 52 [AMF]
 Champion Hill Rita 2552

Advance Special Design 14L
 Advance Mis Design 32R
 Advance Victoria 473-34M

N Bar Emulation EXT [AMF-NHF]
 D B C S Blueblood Sue B935
 Leachman Saugahatchee 3000C [AMF-NHF]
 Champion Hill Rita 1158
 Bon View New Design 1407 [AMF-NHF]
 B S F Miss Moneyline 40F
 Connealy Dateline
 Champion Hill Victoria 705

| | |
|------|-----------|
| CW | I+10 .05 |
| MARB | I+.35 .05 |
| RE | I+.19 .05 |
| FAT | I+.001.05 |

| BW | WW | YW | MILK | \$W | \$F | \$G | \$B |
|-----------|----------|----------|----------|--------|--------|-----|-----|
| I+2.6 .19 | I+40 .16 | I+73 .15 | I+18 .05 | +23.11 | +16.50 | | |

GAHLER VICTORIA 5832: This extremely fancy yet powerful heifer sells A.I. bred to Mytty In Focus on 12/16/09 and pasture exposed to our new herd bull, the 2009 Ohio State Fair champion - Majors First Street. She was the Champion Female at the 2009 Blackswamp Angus Show, and class winner at the 2009 Ohio State Fair, and can still be shown in 2010. Super disposition and dependable genetics, tracing to "EXT," Saugahatchee, and the Champion Hill Rita and Victoria Cow families.



Gahler Victoria 5832 - Lot 36

37

CLAYLICK RUN ESTHER W009

Calved: 01/12/09 Tattoo: W009 Reg. +16350704
Owned by: Claylick Run Angus, Newark, OH

| | | | | | | | | |
|--|-----------|-----------|-------------|--------------------------------|------------|------------|------------|----------------|
| C A Future Direction 5321 [AMC-NHC] C A Miss Power Fix 308 [AMF] | | | | G A R Precision 1680 [AMC-NHC] | | | | CW |
| ALC Big Eye D09N [AMF-NHF] | | | | S V F Bandolier | | | | +22 .05 |
| ALC Hazel L12L [AMF] | | | | Alc Hazel K14H | | | | MARB |
| Twin Valley Precision E161 [NHC-AMF-RDF] | | | | G A R Precision 1680 [AMC-NHC] | | | | +44 .05 |
| Thomas Ester 3651 | | | | W C C Blackcap C9 [RDC] | | | | RE |
| Thomas Ester 4123 | | | | N Bar Emulation EXT [AMF-NHF] | | | | +58 .05 |
| | | | | Thomas Ester 1204 | | | | FAT |
| BW | WW | YW | MILK | \$W | \$F | \$G | \$B | +031.05 |
| I+1.5 .05 | I+47 .05 | I+88 .05 | I+28 .05 | +30.17 | +28.33 | +28.28 | +56.02 | |

CLAYLICK RUN ESTHER W009
Claylick Run Esther W009 is a true sale feature. A direct daughter of the \$21,000 Claylick Run donor Thomas Ester 3651 and the Select Sires feature ALC Big Eye. She will be a very competitive show heifer, but her true value will be in any progressive breeding program. We don't sell this kind very often, don't miss out. Calfhod vaccinated. Open.



Thomas Ester 3651 - Dam of Lot 37

38

KCC BLACKCAP 59

Calved: 01/12/09 Tattoo: 59 Reg. 16390253
Owned by: Kasler Cattle Company, Millfield, OH

| | | | | | | | | |
|---------------------------------------|-----------|-----------|-------------|------------------------------------|------------|------------|------------|--|
| G A R Grid Maker [AMF-NHF] | | | | G D A R Traveler 044 [AMF-NHF] | | | | |
| S A V Bismarck 5682 [AMF-NHF] | | | | G A R Precision 2536 [AMC-NHF] | | | | |
| S A V Abigale 0451 | | | | Schoenes Fix It 826 [AMF-NHF] | | | | |
| TC Total 410 [AMF-NHF] | | | | S A V Abigale 6062 | | | | |
| Leachman Saugahatchee 3000C [AMF-NHF] | | | | Bon View New Design 208 [AMF-NHF] | | | | |
| Champion Hill Blackcap 1447 | | | | TC Erica Eileen 2047 [NHC-AMF] KCC | | | | |
| | | | | Champion Hill Blackcap 060 | | | | |
| BW | WW | YW | MILK | \$W | \$F | \$G | \$B | |
| I+9 .05 | I+52 .05 | I+94 .05 | I+24 .05 | +29.29 | +32.38 | | | |

KCC BLACKCAP 59 comes from a Champion Hill bloodline that has had much success for our herd. As cattle producers you can appreciate her easy fleshing ability and sound structure. Combine all this with the unique calving ease sire, SAV Bismarck, which produced the Grand Champion and Reserve Grand Champion females at the 2009 National Junior Angus Show, and you can't go wrong. *Vaccinations Up-To-Date*

39

HFS MAY FLOWER 922

Calved: 02/02/09 Tattoo: 922 Reg. 16505542
Owned by: HFS Angus, Radnor, OH

| | | | | | | | | |
|-------------------------------|-----------|-----------|-------------|-------------------------------|------------|------------|------------|--|
| B C Marathon 7022 [AMF-NHF] | | | | O C C Kirby 633K | | | | |
| BC 7022 Raven 7965 [AMF-NHF] | | | | Gibbet Hill Mignonne E37 | | | | |
| O C C Blackbird 796F | | | | O C C Bonanza 880B | | | | |
| S A F 598 Bando 5175 [AMF] | | | | O C C Blackbird 779A | | | | |
| Sunset Valley May Flower 3904 | | | | Bon View Bando 598 [AMF] | | | | |
| S A V Mayflower 5117 | | | | S A F Royal Lass 1002 | | | | |
| | | | | N Bar Emulation EXT [AMF-NHF] | | | | |
| | | | | Hills Mulben Mayflower 734 | | | | |
| BW | WW | YW | MILK | \$W | \$F | \$G | \$B | |
| I+3.5 .05 | I+45 .05 | I+81 .05 | I+21 .05 | +22.88 | +22.25 | | | |

HFS MAYFLOWER 922
A February daughter of the popular high Ribeye Area EPD sire BC 7022 Raven 7965. This is a low birth weight, high-performing female with loads of eye-appeal. Her dam is from the well-known Sunset Valley herd. Pedigree Free for AM-NH.



HFS Mayflower - Lot 39

40

HFS BLACKCAP GAL 921

Calved: 02/02/09 Tattoo: 921 Reg. 16503751
Owned by: HFS Angus, Radnor, OH

| | | | | | | | | |
|---------------------------------------|-----------|-----------|-------------|--------------------------------|------------|------------|------------|----------------|
| S A V 8180 Traveler 004 [AMF-NHF-RDF] | | | | Sitz Traveler 8180 [AMF-NHF] | | | | CW |
| S A V Net Worth 4200 [AMF-NHF] | | | | Boyd Forever Lady 8003 | | | | +18 .05 |
| S A V May 2410 | | | | S A F 598 Bando 5175 [AMF] | | | | MARB |
| C A Future Direction 5321 [AMC-NHC] | | | | S A V May 6269 | | | | +46 .05 |
| Maplecrest Blackcap Gal 430 | | | | G A R Precision 1680 [AMC-NHC] | | | | RE |
| Ms Blackcap Gal 1156 | | | | C A Miss Power Fix 308 [AMF] | | | | +37 .05 |
| | | | | V D A R Lucys Boy [AMF-NHF] | | | | FAT |
| | | | | MS Blackcap Band of R D 1301 | | | | +026.05 |
| BW | WW | YW | MILK | \$W | \$F | \$G | \$B | |
| I+3.8 .05 | I+50 .05 | I+91 .05 | I+31 .05 | +24.28 | +30.15 | +27.59 | +53.24 | |

HFS BLACKCAP GAL 921
This February sale attraction is sired by the \$117,500 Genex/CRI sire SAV Net Worth 4200. She is a full sister to one of the top selling females in the 2009 Ohio Beef Expo. Her dam is one of our most productive females from the Maplecrest Angus herd. Tested AMF-NHF.



HFS Blackcap Gal 921 - Lot 39

41

KCC BEAUTY 139

Calved: 02/07/09 Tattoo: 139 Reg. 16390339
Owned by: Kasler Cattle Company, Millfield, OH

| | | | | | | | | |
|---------------------------------------|-----------|-----------|-------------|------------------------------|------------|------------|------------|----------------|
| S A V 8180 Traveler 004 [AMF-NHF-RDF] | | | | Sitz Traveler 8180 [AMF-NHF] | | | | CW |
| S A V Net Worth 4200 [AMF-NHF] | | | | Boyd Forever Lady 8003 | | | | +21 .05 |
| S A V May 2410 | | | | S A F 598 Bando 5175 [AMF] | | | | MARB |
| BR Beauty 244 | | | | S A V May 6269 | | | | +27 .05 |
| Hoff Limited Edition S C 594 | | | | Hoff Charger S C 242 | | | | RE |
| V D A R Lucys Boy [AMF-NHF] | | | | Hoff Boss Lady S C 3V9 | | | | +31 .05 |
| B R Beauty 700 | | | | Circle Oak Beauty 617 | | | | FAT |
| | | | | | | | | +049.05 |
| BW | WW | YW | MILK | \$W | \$F | \$G | \$B | |
| I+5.0 .05 | I+55 .05 | I+100 .05 | I+28 .05 | +21.96 | +37.31 | +16.29 | +45.36 | |

KCC BEAUTY 139: A Net Worth daughter that is long-bodied, naturally thick and possess sound structure and attractive design in a female. This female also has the capability of producing high quality offspring that will improve any herd. *Vaccinations Up-To-Date*

42 **CLAYLICK RUN WINDSONG W037**
 Calved: 02/06/09 Tattoo: W037 Reg. 16347145
 Owned by: Claylick Run Angus, Newark, OH

O C C Legend 616L
 B C Lookout 7024 [AMF-NHF]
 Gibbet Hill Mignonne E37

VDAR New Trend 3587
 Claylick Run Windsong 040
 Claylick Run Windsong 7147

O C C Emblazon 854E
 O C C Blackbird 632J
 Papa Equator 2928 [AMF-NHF]
 Gibbet Hill Mignonne TR 29
 V D A R New Trend 315 [AMF-NHF]
 V D A R Lass 3160
 Bon View Emulation Ext 473 [AMF-NHF]
 Windsong of Manx

| | | |
|------|-----|-----|
| CW | +10 | .05 |
| MARB | | |
| | +18 | .05 |
| RE | | |
| | +26 | .05 |
| FAT | | |

| BW | WW | YW | MILK | \$W | \$F | \$G | \$B | | | | | | |
|------|-----|-----|------|------|-----|-----|-----|--------|--------|--------|--------|-------|-----|
| +3.2 | .05 | +42 | .05 | +173 | .05 | +16 | .05 | +22.40 | +15.77 | +19.12 | +35.66 | +0.09 | .05 |

CLAYLICK RUN WINDSONG W037
 Claylick Run Windsong W037 is sired by the popular BC Lookout out of the foundation Claylick Run Windsong 040, now a donor for Binckley Cattle Co.. This cow family is one of our strongest. A nice show prospect for any junior. Calfhood Vaccinated. Open.

44 **HAF LASSIE 909 OF 192**
 Calved: 02/26/09 Tattoo: 909 Reg. 16402627
 Owned by: Home Acres Farm, Lebanon, OH

B A R Ext Traveler 205 [AMF-NHF]
 C R A Bextor 872 5205 608 [AMF-NHF]
 Cra Lady Jaye 608 498 S Easy

Home Acres Lassie 192
 R&K S W F Queen Lassie 661

N Bar Emulation EXT [AMF-NHF]
 B A R Queen Traveler 3015
 G A R Sleep Easy 1009 [AMF-NHF]
 H H F 917 Lady 975 498
 D H D Traveler 6807 [AMF-NHF]
 Rita 4B20 of 0FB1 Bando
 Rockn D Ambush 1531 [AMF-NHF]
 R&K S W F Queen Lassie 409

| BW | WW | YW | MILK | \$W | \$F | \$G | \$B | | | | |
|------|-----|-----|------|-----|-----|-----|-----|--------|--------|--|--|
| +1.5 | .05 | +45 | .22 | +85 | .18 | +23 | .19 | +26.29 | +26.13 | | |

HAF LASSIE 909 OF 192
 A well balanced, very deep heifer by Bextor. The maternal pedigree is stacked with sires like 616, Rockn D Ambush & Saugahatchee. This heifer will make a very good brood cow with an excellent disposition.

45 **JOHNSON PRIMROSE LADY 18**
 Calved: 03/01/09 Tattoo: 18 Reg. 16350152
 Owned by: Anderson Farms, Lisbon, OH

Rito 112 of 2536 Rito 616 [AMF-NHF]
 Johnson Rito 112

S V F Oakmere Forever Lady 309 S V F
 Forever Lady 176B
 Traveler 124 G D A R
 G D A R Forever Lady 718
 Sitz Traveler 8180 [AMF-NHF]
 S V F Primrose Lady 9446

GDAR SVF Traveler 234D [AMF-NHF]
 S V F Primrose Lady 152M
 S V F Primrose Lady 1321

Rito 616 of 4B20 6807 [AMF-NHF]
 G A R Precision 2536 [AMC-NHF]
 Leachman Right Time
 Forever Lady 176B
 Traveler 124 G D A R
 G D A R Forever Lady 718
 Sitz Traveler 8180 [AMF-NHF]
 S V F Primrose Lady 9446

JOHNSON PRIMROSE LADY 18
 With genetics and phenotype, this female should work well for any operation - commercial or seedstock.

47 **RAINS FOREVER BABS LONHFR**
 Calved: 03/14/09 Tattoo: R199 Reg. 16371216
 Owned by: Rains Angus, Mercer, PA

O C C Legend 616L
 B C Lookout 7024 [AMF-NHF]
 Gibbet Hill Mignonne E37

P V F New Horizon 001 [AMF-NHF]
 Rains Forever Babs NHFR
 Rains Forever Barbie FRD381

O C C Emblazon 854E
 O C C Blackbird 632J
 Papa Equator 2928 [AMF-NHF]
 Gibbet Hill Mignonne TR 29
 B/R New Design 323
 Hyline Ellen 410
 SVF Siebrings Forever Russ [AMF-NHF]
 Rains Barbara D381

| BW | WW | YW | MILK | \$W | \$F | \$G | \$B | | | | |
|------|-----|-----|------|-----|-----|-----|-----|--------|--------|--|--|
| +3.9 | .33 | +46 | .24 | +86 | .16 | +17 | .13 | +20.11 | +26.74 | | |

RAINS FOREVER BABS LONHFR:
 One of our best balanced and phenotypically correct 2009 heifer calves. Like her sire she is a stout made hip and quarter with a beautiful feminine front. A barn favorite at the PA Farm Show where she was selected Reserve Late Jr heifer calf champion. Super disposition! Her dam by New Horizon was also the dam of one of our 2009 Ohio Beef Expo entries. Balanced EPD's in an easy fleshing moderate framed female. Dam is 4 at 106 for weaning. BW 80 lb unassisted. Calfhood vaccinated.

43 **HFS EVA 925**
 Calved: 02/16/09 Tattoo: 925 Reg. 16505543
 Owned by: HFS Angus, Radnor, OH

BC 7022 Raven 7965 [AMF-NHF]
 HFS Eva 712

Maplecrest Eva of RBC 003

O C C Kirby 633K
 Gibbet Hill Mignonne E37
 O C C Bonanza 880B
 O C C Blackbird 779A
 Twin Valley Precision E161 [NHC-AMF-RDF]
 BR Royal Lass 7036-19
 Famous 7001 [AMF]
 G A R Ext 2066

| BW | WW | YW | MILK | | |
|------|-----|-----|------|-----|-----|
| +3.2 | .05 | +44 | .05 | +15 | .05 |

HFS EVA 925
 A February show prospect sired by BC 7022 Raven 7965. Her grandam is Maplecrest Eva of RBC 003 which has produced several show winners that have gone on to be very productive females in our herd. She is tested AMF-NHF.



HFS Eva 925 - Lot 43

46 **KCC SKYMERE 179**
 Calved: 03/04/09 Tattoo: 179 Reg. 16394285
 Owned by: Kasler Cattle Company, Millfield, OH

G A R Grid Maker [AMF-NHF]
 KCC Skymere 105

Weisels Lacy Skymere 1170

D H D Traveler 6807 [AMF-NHF]
 G D A R Blackcap Lady 840
 G A R Precision 1680 [AMC-NHC]
 G A R Ext 2104
 B/R New Design 036 [AMF-NHF]
 White Fence Pride H1
 Leachman Saugahatchee 3000C [AMF-NHF]
 Champion Hill Lorie Skymere

| BW | WW | YW | MILK | \$W | \$F | \$G | \$B | | | | |
|------|-----|-----|------|-----|-----|-----|-----|--------|--------|--|--|
| +4.9 | .05 | +56 | .05 | +98 | .05 | +14 | .05 | +20.16 | +34.87 | | |

KCC SKYMERE 179 has "show ring" written all over her! She is a very complete female that expresses many traits that are found in the show ring. With the winning combination of muscle expression, depth of body and spring of rib, and still expresses femininity throughout, this heifer is one that will be appreciated by all cattle producers. Her dam was Bred & Owned Grand Champion at the Eastern Ohio Preview Show in 2006. *Vaccinations Up-To-Date*



Rains Forever Babs LONHFR - Lot 47

48

KINGSWAY CHEYENNE 128
 Calved: 04/03/09 Tattoo: 128 Reg. +16484061
 Owned by: Kingsway Angus, Tiffin, OH

Bon View New Design 878 [AMF-NHF]
 W C C Special Design L309 [AMF-NHF]
 N Bar Primrose 2424
 O S U 6T6 Ultra
 Kingsway Cheyenne 119
 Kingsway Dianna 401

B/R New Design 036 [AMF-NHF]
 Bon View Gammer 85
 Emulation 31 [DWF-RDF]
 Primrose N Bar 9962
 S S Traveler 6T6 [AMF-NHF]
 D F Empress 6079
 R&J Extraordinary 1345
 Kingsway Candy J 875

| |
|------------|
| CW |
| I+11 .05 |
| MARB |
| I+.36 .05 |
| RE |
| I-.17 .05 |
| FAT |
| I-.005 .05 |

| BW | WW | YW | MILK | \$W | \$F | \$G | \$B |
|-----------|----------|----------|----------|--------|--------|--------|--------|
| I+4.5 .05 | I+48 .05 | I+87 .05 | I+18 .05 | +19.81 | +26.96 | +21.75 | +41.46 |

KINGSWAY CHEYENNE 128
 L309 Daughters are in demand for their showing and brood cow abilities. This is a well balance attractive female that will be in the top end of most purebred or commercial cow herds. Calfhood vaccinated.



Kingsway Cheyenne 128 - Lot 48

49

JOHNSON JILT 21
 Calved: 04/05/09 Tattoo: 21 Reg. 16350149
 Owned by: Anderson Farms, Lisbon, OH

Rito 112 of 2536 Rito 616 [AMF-NHF]
 Johnson Rito 112
 SVF-Oakmere Forever Lady 309 S V F
 Famous 7001 [AMF]
 Summitcrest Jilt K106
 Summitcrest Jilt F009

Rito 616 of 4820 6807 [AMF-NHF]
 G A R Precision 2536 [AMC-NHF]
 Leachman Right Time
 Forever Lady 176B
 S A F Fame [AMF-NHF]
 T K Karen 1369
 TC Rancher 056
 Summitcrest Jilt D273

JOHNSON JILT 21
 From the same program as our lot 45 female, but backed by generations of proven Summitcrest performance.

50

CLAYLICK RUN RITA W086
 Calved: 04/05/09 Tattoo: W086 Reg. +16500326
 Owned by: Claylick Run Farm, Newark, OH

O C C Kirby 633K
 B C Marathon 7022 [AMF-NHF]
 Gibbet Hill Mignonne E37
 BR Midland [AMF-NHF]
 J Bar J Midland Rita 547
 Bainbridge Rita J039 [AMF]

O C C Emblazon 854E
 O C C Blackbird 785H
 Papa Equator 2928 [AMF-NHF]
 Gibbet Hill Mignonne TR 29
 Twin Valley Precision E161 [NHC-AMF-RDF]
 BR Royal Lass 7036-19
 Rito 3X25 of 5H11 EXT [AMF]
 Rita 6F39 of 3B16 Rito 353

| |
|------------|
| CW |
| I+16 .05 |
| MARB |
| I+.23 .05 |
| RE |
| I+.36 .05 |
| FAT |
| I+.009 .05 |

| BW | WW | YW | MILK | \$W | \$F | \$G | \$B |
|-----------|----------|----------|----------|--------|--------|--------|--------|
| I+4.2 .05 | I+53 .05 | I+88 .05 | I+18 .05 | +24.05 | +26.04 | +21.44 | +44.62 |

CLAYLICK RUN RITA W086
 If you like them deep, thick and pretty, don't miss this heifer. She is a good one. Bred to be a champion. Sired by BC Marathon from a Midland daughter of the \$18,000 Granny Creek donor Bainbridge Rita J039, whose progeny have topped many sales throughout the nation. Calfhood Vaccinated. Open.



Bainridge Rita J039 - Grand Dam of Lot 50

51

KINGSWAY GEORGINA 124
 Calved: 04/08/09 Tattoo: 124 Reg. +16475870
 Owned by: Kingsway Angus, Tiffin, OH

Twin Valley Precision E161 [NHC-AMF-RDF]
 BR Midland [AMF-NHF]
 BR Royal Lass 7036-19
 Maple Lane Forever Ready 850
 CHAMPION HILL Georgina 2608
 Champion Hill Georgina 901

G A R Precision 1680 [AMC-NHC]
 W C C Blackcap C9 [RDC]
 S A F Neutron [AMF-NHF]
 S A F Royal Lass 7036
 N Bar Emulation EXT [AMF-NHF]
 SVF Forever Lady 1120
 D H D Traveler 6807 [AMF-NHF]
 L L A Georgina 419

| |
|------------|
| CW |
| I+2 .05 |
| MARB |
| I+.42 .05 |
| RE |
| I+.15 .05 |
| FAT |
| I+.013 .05 |

| BW | WW | YW | MILK | \$W | \$F | \$G | \$B |
|-----------|----------|----------|----------|--------|--------|--------|--------|
| I+2.5 .05 | I+43 .05 | I+85 .05 | I+16 .05 | +21.06 | +26.90 | +27.93 | +39.55 |

KINGSWAY GEORGINA 124
 A beautiful Midland daughter here out of the 2608 cow family. 2608 was the 2002 Ohio State Fair champion Angus female as well as winner of the 2002 American Angus Futurity. Maternal brother topped the 2009 Ohio Beef Expo Angus sale. EPD's, genetics, and eye appeal attractively packaged to become a show heifer and cow prospect. Calfhood vaccinated.



Kingsway Georgina 124 - Lot 51

52

D C 3000 GEORGINA 902
 Calved: 04/29/09 Tattoo: 902 Reg. 16315762
 Owned by: DC Angus, West Chester, OH

N Bar Emulation EXT [AMF-NHF]
 Leachman Saugahatchee 3000C [AMF-NHF]
 Leachman B C 7100
 Bon View New Design 1407 [AMF-NHF]
 D C Georgina 301
 Royal Georgina 734

Emulation N Bar 5522
 N Bar Primrose 2424
 Rito 2100 G D A R
 Canyon Colossal Queen 0727
 B/R New Design 036 [AMF-NHF]
 Bon View Pride 664
 D H D Traveler 6807 [AMF-NHF]
 L L A Georgina 419

| BW | WW | YW | MILK | \$W | \$F | \$G | \$B |
|-----------|----------|----------|----------|--------|--------|-----|-----|
| I+3.0 .05 | I+42 .05 | I+80 .05 | I+24 .05 | +22.75 | +22.41 | | |

D C 3000 GEORGINA 902
 This fancy, correct, exciting April show prospect goes back to one of the greatest show heifer dams of all time - LLA Georgina 419. Her dam, DC Georgina 301 was a many time champion for us, and combined with the many time show sire of the year, Leachman Saugahatchee 300C, this resulting female is a sure thing phenotypically and genetically!

53

KINGSWAY LASSIE 135

Calved: 07/02/09 Tattoo:135 Reg. +16486749
Owned by: Kingsway Angus, Tiffin, OH

Twin Valley Precision E161 [NHC-AMF-RDF]
BR Midland [AMF-NHF]
BR Royal Lass 7036-19

Northern Improvement 4480 GF [AMF-NHF]
Kingsway Lassie 52
Kiata Skylight 832

G A R Precision 1680 [AMC-NHC]
W C C Blackcap C9 [RDC]
S A F Neutron [AMF-NHF]
S A F Royal Lass 7036
TC Stockman 365
Blackcap of R R 5367
Rito 9FB3 of 5H11 Fullback [AMF-NHF]
Powerline Skylight

| BW | WW | YW | MILK | \$W | \$F | \$G | \$B |
|-------|----------|----------|----------|--------|--------|-----|-----|
| I+1.7 | .05 I+40 | .05 I+71 | .05 I+15 | +24.35 | +14.63 | | |



Kingsway Lassie 135 - Lot 53

KINGSWAY LASSIE 135
Truly an excellent show prospect. Out of our ET program and one of our strongest cows. We have 2 full sisters in our herd making this one available for sale. This heifer will be a sale feature with her eye appeal and EPD's in a perfect package. Calfhood vaccinated.

54

NOBLELAND BELLE 922

Calved: 09/27/09 Tattoo: S922 Reg. 16502108
Owned by: Nobleland Farm, Caldwell, OH

S A V 8180 Traveler 004 [AMF-NHF-RDF]
S A V Mandan 5664 [AMF-NHF]
S A V Abigale 0451

Nobleland Road Builder 162
Nobleland Belle 413
Nobleland Belle 120

Sitz Traveler 8180 [AMF-NHF]
Boyd Forever Lady 8003
Schoenes Fix It 826 [AMF-NHF]
S A V Abigale 6062
B S S Road Builder
Nobleland Fortune Elba 516
Sitz Alliance 6595 [AMF-NHF]
Nobleland Belle 717

| BW | WW | YW | MILK | \$W | \$F | \$G | \$B |
|-------|----------|----------|----------|--------|--------|-----|-----|
| I+3.2 | .05 I+52 | .05 I+92 | .05 I+29 | +26.49 | +30.38 | | |



Nobleland Belle 922: This early fall heifer calf is out of the popular SAV Mandan 5664, whose progeny display stunning phenotype and high growth performance. Belle 922 is also from the highly productive Nobleland Belle cow family and shows a promising future with her excellent growth and performance. This heifer has style and balance and could be shown two show seasons because of her age. Calfhood vaccinated, Herd Certified and Accredited, Level 4 John's Test Negative Herd.

55

MAJORS LUCY 927V

Calved: 09/27/09 Tattoo: 927V Reg. 16437611
Owned by: Gahler Farms, Graytown, OH

S A V 8180 Traveler 004 [AMF-NHF-RDF]
S A V Net Worth 4200 [AMF-NHF]
S A V May 2410

Gdar Russ 8346
W C C Lucy 208
W C C 1483 Lucy 425

Sitz Traveler 8180 [AMF-NHF]
Boyd Forever Lady 8003
S A F 598 Bando 5175 [AMF]
S A V May 6269
Gdar SVF Russ 184B
G D A R Rachel 1101
R R 9440 Scotch Cap 1483 [AMF-NHF]
Sedgwicks Lucy 8033

| BW | WW | YW | MILK | \$W | \$F | \$G | \$B |
|-------|----------|----------|----------|--------|--------|-----|-----|
| I+3.9 | .05 I+47 | .05 I+92 | .05 I+24 | +20.70 | +32.32 | | |



Lot 52

MAJOR'S LUCY 927V
This attractive fall heifer calf was purchased at the side of her dam in the Majors Farms Dispersal, but we feel she has a bright future in the show ring for a Jr. member. So here is an opportunity to own a daughter of the very popular Net Worth that can be shown for 2 years. Great pattern and excellent growth EPD's, out of a "Russ" dam.

Buyer Notes / Update Information

All EPD's printed are as listed with the American Angus Association as of 1/24/10. If none listed, no data was on file, but may be available sale day.

Update sheets will be available on sale day with:

- breeding information on females
- semen test results on bulls
- BVD test results
- AM and NH status if test required

Reference Sires

B C MARATHON 7022
Sire of Lots 2, 9, 29, 50



| BW | WW | MILK | YW |
|----------|---------|---------|---------|
| +5.8 .95 | +58 .92 | +16 .44 | +93 .88 |

B C LOOKOUT 7024
Sire of lots 11, 21, 42, 47



| BW | WW | MILK | YW |
|----------|---------|---------|---------|
| +2.7 .88 | +48 .81 | +13 .33 | +85 .62 |

S A V NET WORTH 4200
Sire of lots 16, 40, 41, 55



| BW | WW | MILK | YW |
|----------|---------|---------|----------|
| +4.8 .96 | +59 .94 | +32 .61 | +112 .90 |

S A V MANDAN 5664
Sire of lots 23, 27, 54



| BW | WW | MILK | YW |
|----------|---------|---------|----------|
| +4.1 .83 | +57 .75 | +33 .24 | +106 .39 |

S A V BISMARCK 5682
Sire of lots 3, 6, 38



| BW | WW | MILK | YW |
|----------|---------|---------|---------|
| +4.7 .96 | +44 .95 | +20 .92 | +81 .92 |

S A V 8180 TRAVELER 004
Sire of lots 10, 32



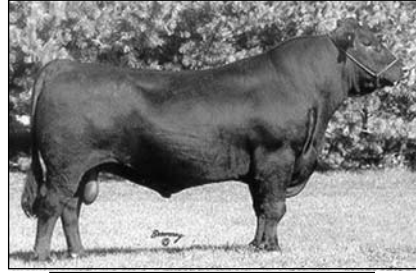
| BW | WW | MILK | YW |
|----------|---------|---------|----------|
| +3.5 .98 | +57 .97 | +24 .93 | +104 .96 |

T C FREEDOM 104
Sire of lots 12, 20



| BW | WW | MILK | YW |
|----------|---------|---------|----------|
| +3.0 .97 | +54 .95 | +28 .89 | +100 .93 |

C R A BEXTOR 872 5205 608
Sire of lots 17, 44



| BW | WW | MILK | YW |
|----------|---------|---------|---------|
| +1.6 .96 | +51 .94 | +33 .82 | +96 .91 |

GAR GRID MAKER
Sire of lots 18, 46



| BW | WW | MILK | YW |
|----------|---------|---------|----------|
| +5.9 .97 | +68 .96 | +10 .92 | +120 .94 |

PVF NEW HORIZON 001
Sire of lots 15, 30



| BW | WW | MILK | YW |
|----------|---------|---------|----------|
| +3.9 .91 | +59 .86 | +26 .73 | +107 .79 |

B C RAVEN
Sire of lots 39, 43



| BW | WW | MILK | YW |
|----------|---------|---------|---------|
| +3.6 .91 | +47 .86 | +17 .20 | +79 .75 |

BR MIDLAND
SIRE OF LOTS 51, 53



| BW | WW | MILK | YW |
|----------|---------|--------|---------|
| +1.7 .98 | +47 .96 | +9 .94 | +85 .95 |

Thank you for your interest in the Ohio Angus Association and the genetics of its members!
Please use the form on the back cover to become a member of the association and begin taking advantage of our many member benefits today!

Ohio Angus Association

Annual Dues \$35.00

Please note: Memberships are by calendar year, and are due on January 1st each year.
Members receive a free subscription to ANGUS TOPICS magazine, the monthly Ohio Angus Newsletter, a listing in the OAA Directory, one free classified web ad, e-mail news and updates, and more...

Membership type: Renewal New member

Business or Farm Name: _____

Owner(s) Name: _____

Address: _____ No. of Brood Cows _____

City: _____ State: _____ Zip: _____ County: _____

Home Phone: (____) _____ Farm or Cell Phone: (____) _____

Website: _____

Email: _____

Check method to receive the newsletter: E-mail* U.S. Mail** (check one only)

*will be e-mailed a link to the downloadable version on www.ohioangus.org

** Due to U.S. bulk mailing procedures, receipt takes 1-3 weeks longer than e-mail - OAA cannot guarantee timeliness of receipt or deadlines

Check any of the following you would like to receive via e-mail, as they become available to OAA:

American Angus news releases Ohio Angus news releases Ohio Jr. Angus news releases / info

Show/Sale/event forms Award applications Ohio Beef industry news / notes

Mail to: Ohio Angus Association, Allen Gahler, Secretary/Fieldman

641 N. Elliston Trowbridge Rd. Graytown, Ohio 43432

Phone (419) 350-2091

Email: secretary@ohioangus.org



Allen Gahler, Secretary/Fieldman
641 N Elliston-Trowbridge Rd.
Graytown, Ohio 43432
Phone: 419-350-2091

NON-PROFIT
Organization
U.S. Postage
PAID
Minster, OH
45865
Permit No. 2